



Lamoille  
RESTORATIVE CENTER



**UP**  
for  
LEARNING

# **Welcome!**

## **Restorative Practices & Youth-Adult Partnership in Upper Elementary School**



# **What is Restorative Justice?**

**“Restorative Justice is a philosophy and set of practices, rooted in Indigenous teachings, that emphasize our interconnection by repairing relationships when harm occurs while proactively building and maintaining relationships to prevent future harm.”**



**-Amplify RJ**



# Introductions



**Mark Scott**  
Youth  
Programs  
Director



**Emily  
Neilsen**  
Restorative  
Educator

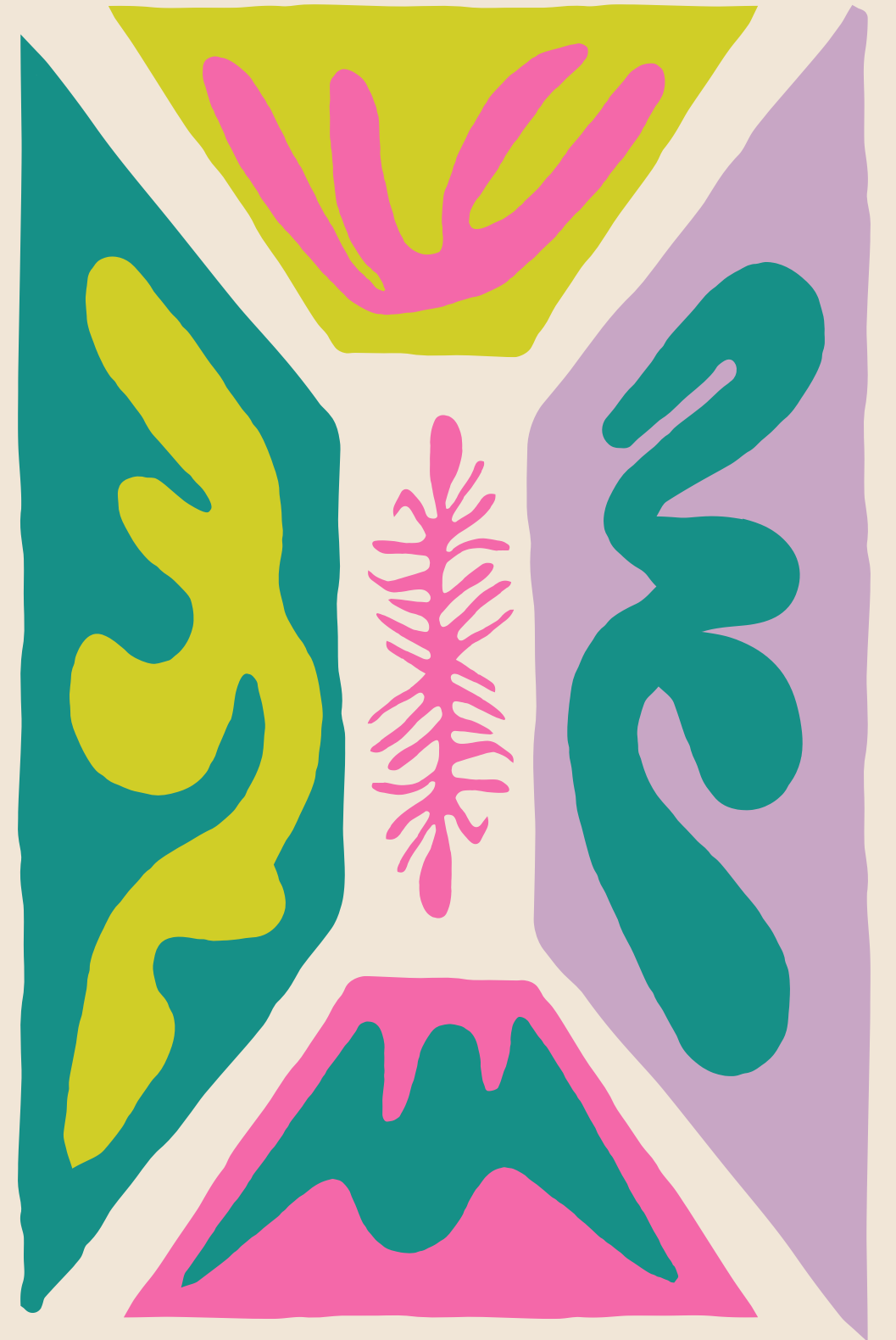


**Ana Lindert-  
Boyes**  
Youth  
Program  
Specialist



**Jackie  
Verley**  
Program  
Director

# Community Building








# Restorative Practices


## Cart Sort



Adults use repetitive and predictable relationship building activities and/or practices to create and strengthen connections

Youth collect and analyze school data to continually improve their education, in partnership with adults.

Youth believe that they are not ready to be central to decision making about their education and defer to adults.





Adults see their role as delivering content. Community building and connecting with students as individuals is not necessarily prioritized or modeled.



# **Restorative Practices**

## **Cart Sort**

### **Reflection**

- **Which 2-3 cards are a current strength in your school(s)?**
  - **Which 2-3 cards are standing out as opportunities to explore in your school(s)?**
- 
- 



# Partnership Timeline

**AWARE grant  
partnership with VT  
Agency of Education  
Personal Power and  
Community  
Connections**

**Focus on Neuroscience,  
development of Core  
Team**

**Increased support and  
involvement from WES  
Administration**

**Adult Professional  
Development**

**RISE-VT**

2020 2021 2022 2023 2024 2025

# Core Team Model

Classroom Teachers

School  
Counselor

Principal

Special  
Education  
Teacher

Community  
Partners

Behaviorist

**Collaborative  
Decision-  
Making  
is Valued**





ADMINISTRATION

ADMINISTRATION

ADMINISTRATION

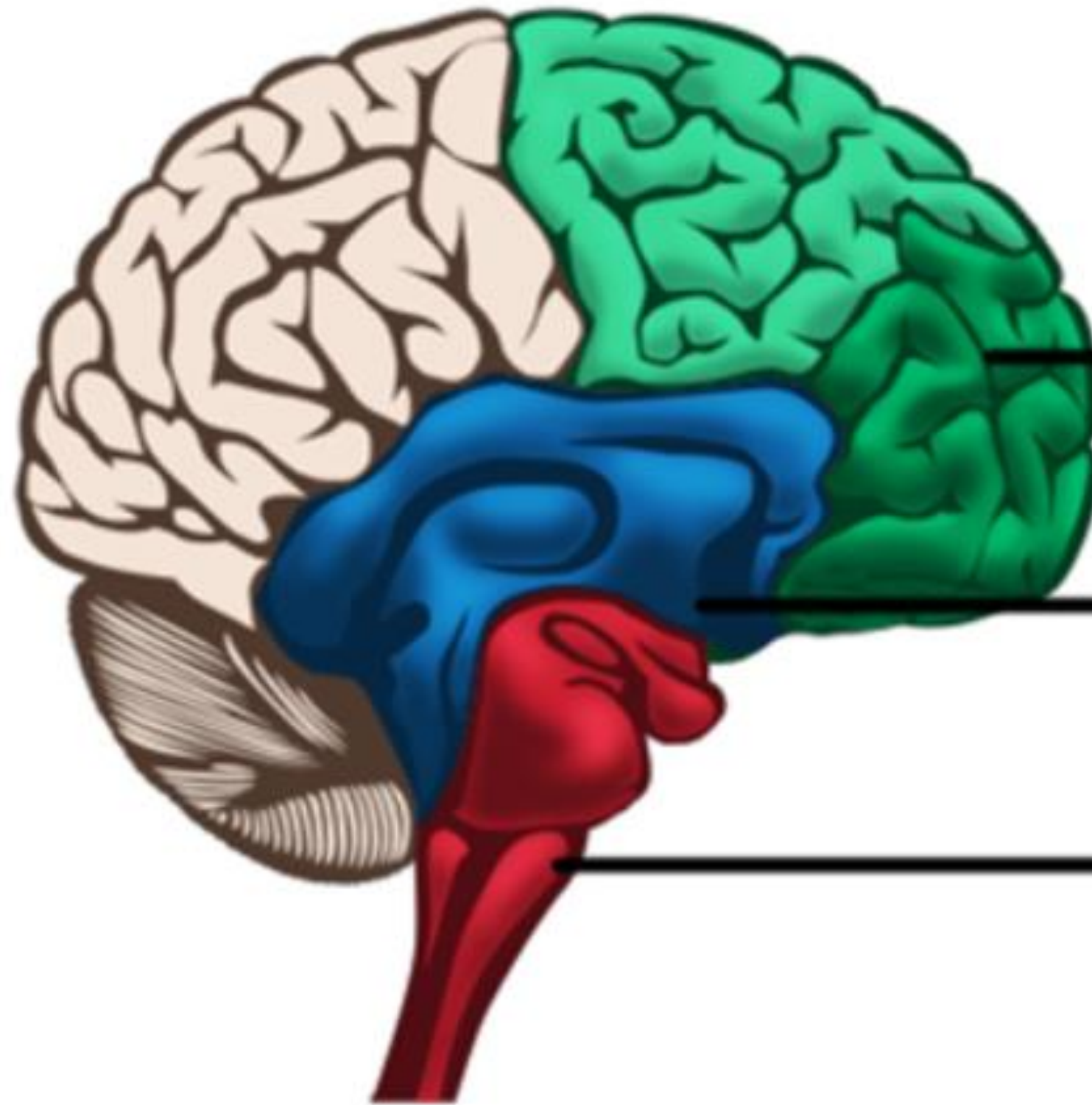
ADMINISTRATION

ADMINISTRATION

# Neuroscience



# The Triune Brain



## **Executive State**

Prefrontal Lobes

**What can I learn from this?**

## **Emotional State**

Limbic System

**Am I loved?**

## **Survival State**

Brain Stem

**Am I safe?**



## Takeaways

- Resistance is common
- Clarity creates next steps
- Many paths lead toward a more relationship-focused approach
- Joy
- Community Partnerships





## Student Quotes about Circles

"Circle opened my mind up to new ideas."

"What I like about circles is that it gives me and my classmates the opportunity to share what's on our minds and express our feelings and not be judged for it."

"Me and my classmates have chances to lead circles and I like that."

"What I like about them is I can listen and understand the person's point of view and get to know them better. That's why I listen more."

## **Reflection**

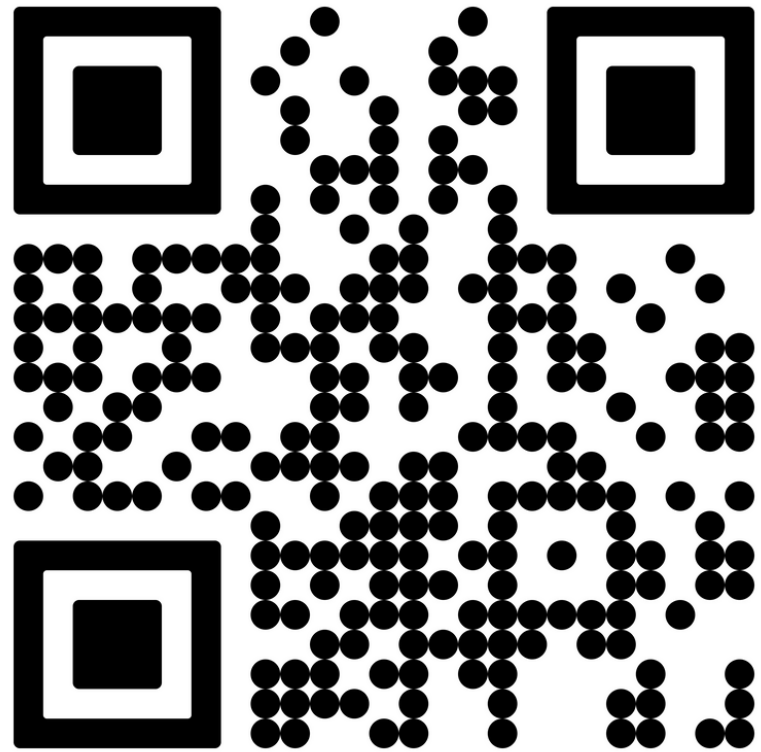
- **Were there things that stood out to you from the card sort?**
- **What aspects of this model feel like an accessible opportunity in your school(s)?**
- **What barriers exist in creating a similar model in your school(s)?**

## **Resources:**

**<https://vtrac.org/resources-2/> (e-learning modules, resource list, videos from VT schools)**

**<https://revelationsineducation.com/resources/> (Applied Educational Neuroscience)**

# Today's slides



**Mark Scott**  
Youth Programs  
Director  
[mScott@lrcvt.org](mailto:mScott@lrcvt.org)



**Emily Neilsen**  
Restorative  
Educator  
[eneilsen@lrcvt.org](mailto:eneilsen@lrcvt.org)



**Ana Lindert-Boyes**  
Youth Program  
Specialist  
[ana@upforlearning.org](mailto:ana@upforlearning.org)



**Jackie Verley**  
Program Director  
[jackie@upforlearning.org](mailto:jackie@upforlearning.org)



